

Family Group Decision Making Statewide Evaluation

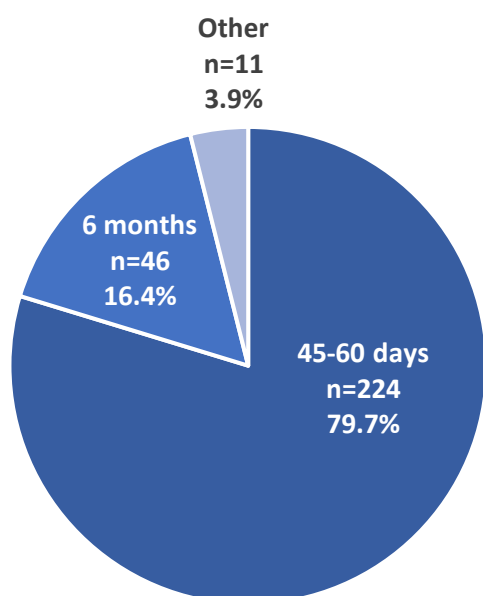
SFY 2021 – 2022

Outcomes Report



This report highlights focus child/youth outcomes that were provided for FGDM conferences that occurred during SFY 2021-2022. During the year, **281 outcome forms** were submitted for **236 conferences** that were held in **19 counties** throughout Pennsylvania. Most of the outcome assessments that were received occurred 45-60 days after the initial conference (**79.7%**; see Figure 1). **Therefore, the subsequent results focus on outcomes reported for 45-60 day follow-ups only.** The data reported are based on evaluation form submissions through September 8, 2022.

Figure 1. Type of Follow-Up (N=281)



Note: The average follow-up time for “other” was 38 days (range = 10-84 days).

Examining outcomes according to primary purpose for holding the conference can provide insight into how FGDM conferences are supporting the needs of focus children/youth and their families. Also, the outcomes may be different depending on the purpose for holding the conference. This report illustrates the general effectiveness of the family’s plan in meeting the conference purpose for each purpose type. However, among 45-60 day follow-up assessments, the largest percentage of conferences were mainly held to keep the focus child/youth in their home (i.e., placement prevention and develop a plan to keep the child in a safe and stable home; **37.5%, n=81** among 216 conferences that had a purpose reported; see Table 1). **Thus, safety, permanency, stability, and well-being outcomes are only presented for conferences that aimed to keep the focus child/youth in their home.** Outcomes for the purpose types of addressing out-of-home

placement, child’s/youth’s needs, and parent’s/caregiver’s needs (frequencies ranging from 31 to 49) will be provided in follow-up reports.

Please note: Outcome forms are completed by a professional, typically the coordinator or facilitator of the conference. Therefore, responses do not reflect the family’s opinions/perspectives of their child’s outcomes. Also, the total number of responses to each outcome question varies, as some evaluation forms did not include a response to every question. Additionally, the sample size of 45-60 day follow-up assessments is small for every conference purpose. Furthermore, the results are only based on evaluation forms submitted by counties participating in the FGDM Statewide Evaluation. Therefore, these results do not represent the outcomes of all children/youth in Pennsylvania who had an FGDM conference. However, the results do contribute to our understanding of the outcomes of these children/youth.

Table 1. Primary Purpose of Conference (Among 45-60 Day Follow-Ups)

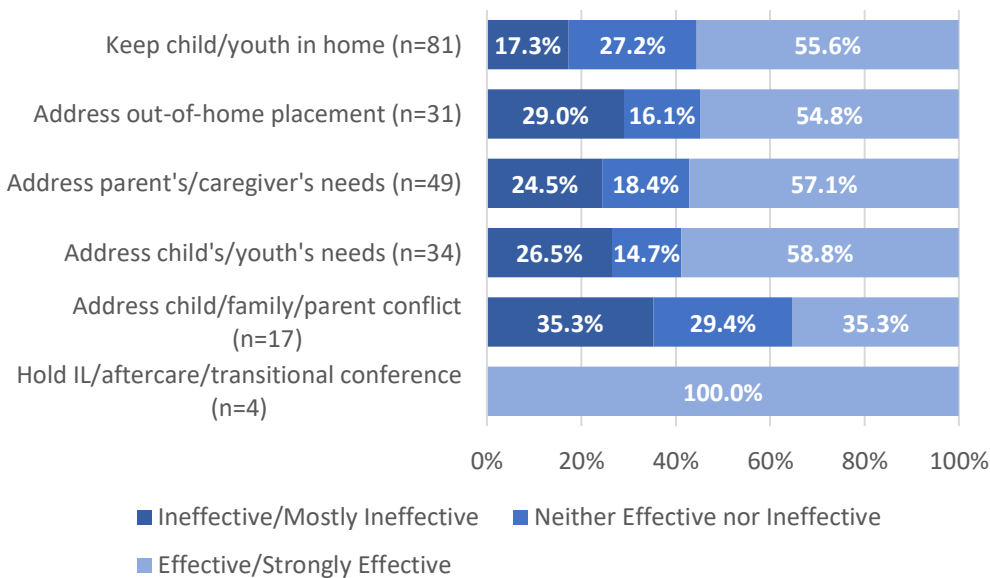
Primary Purpose	n	%
Keep child/youth in home (Develop plan to keep child in a safe and stable home; placement prevention)	81	37.5%
Address out-of-home placement (Change in placement setting; plan and assist in reunification; prevent out-of-home placement disruption)	31	14.4%
Address parent's/caregiver's needs (Identify supports for caregivers; parent's medical/mental health/drug & alcohol issues; housing and environmental issues)	49	22.7%
Address child's/youth's needs (Truancy; lack of supervision; child's medical/mental health/drug & alcohol issues; child's/youth's behavioral issues; prevent further delinquent behavior)	34	15.7%
Address child/family/parent conflict (Child/family/parent conflict; communication issues)	17	7.9%
Hold IL/aftercare/transitional conference	4	1.9%

Note: Results are based on conferences that had a purpose reported (N=216). If appropriate, some response options were grouped into categories of purpose types for analysis. Response options that were grouped are noted in parentheses under the purpose type.

Results

All Conference Purposes

Figure 2. Effectiveness of Family's Plan in Meeting the Conference Purpose

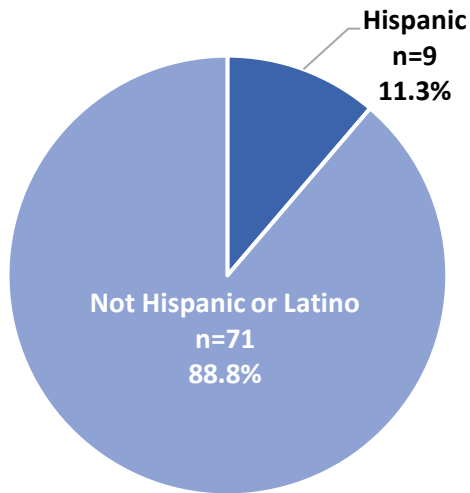


Since the initial conference, how effective has the family's plan been in meeting the conference purpose?

At 45-60 days after the initial conference, for nearly all purpose types, the family's plan has been effective or strongly effective in meeting the conference purpose for over half of focus children/youth (ranging from 54.8% to 100.0%; see Figure 2).

Closer Look at the Conference Purpose of Keeping Focus Child/Youth in Their Home

Figure 3. Focus Child/Youth Ethnicity (N=80)



Focus Child/Youth Demographics

The focus children/youth who had a conference to remain in their home primarily identified as Non-Hispanic/Latino (88.8%; see Figure 3). Most of these children/youth identified as White (76.5%; see Figure 4) and over half of them identified as male (60.0%; see Figure 5). The average age of these children/youth was 8 years (range=0-17 years).

Figure 4. Focus Child/Youth Race (N=81)

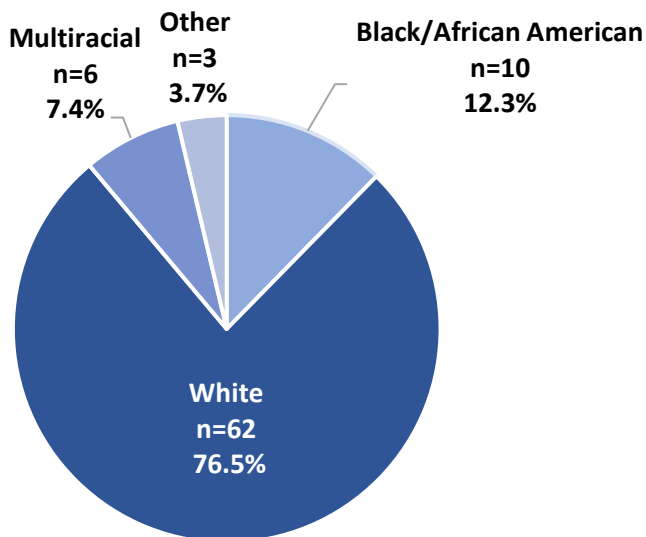
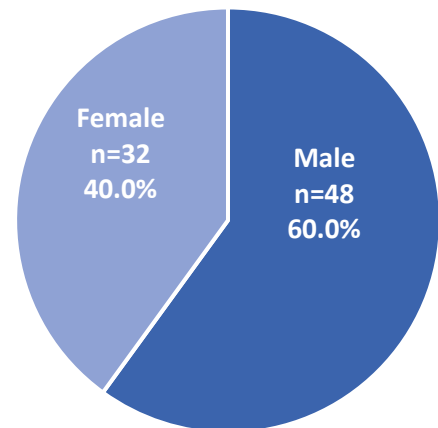
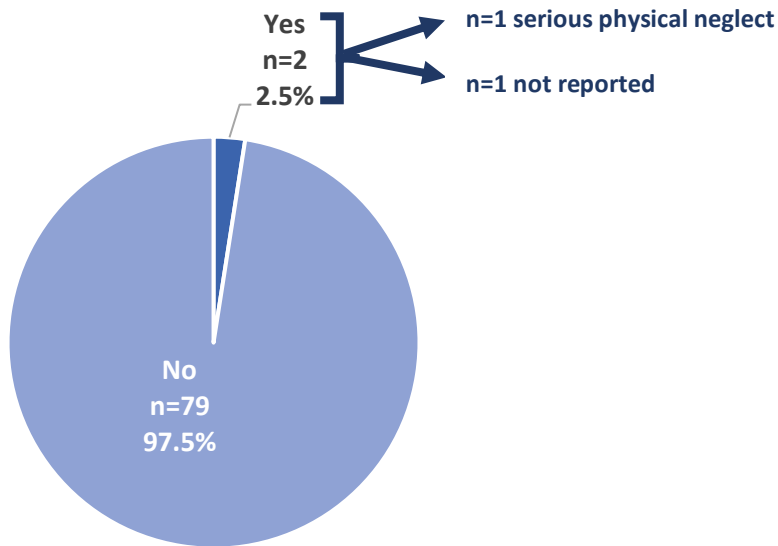


Figure 5. Focus Child/Youth Gender (N=80)



Note: Response options also included Native American/Alaskan/Hawaiian and Asian/Pacific Islander but there were no focus children/youth who identified as these racial groups.

Figure 6. Substantiated/Founded or Indicated Reports of Child Abuse/Neglect (N=81)



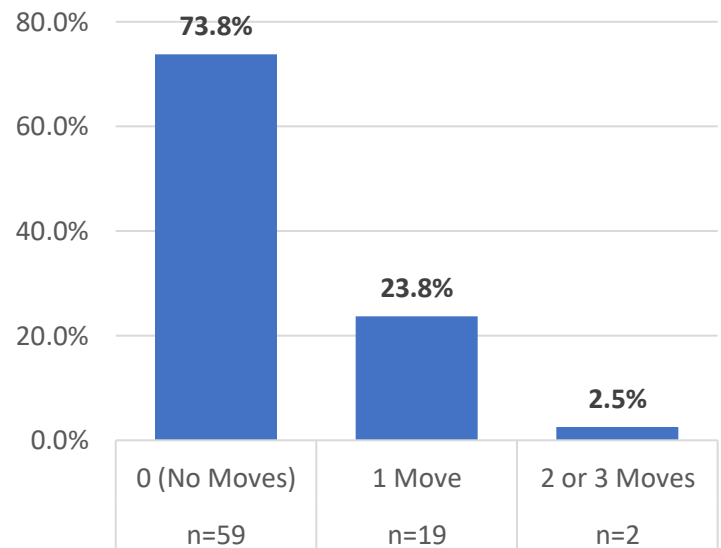
Since the initial conference, have there been substantiated/founded or indicated reports of child abuse/neglect for this child/youth?

At 45-60 days after the initial conference, there were no substantiated/founded or indicated reports of child abuse/neglect for almost all focus children/youth who had a conference to remain in their home (97.5%; see Figure 6).

Since the initial conference, how many times has the child/youth moved (excluding respite stays)?

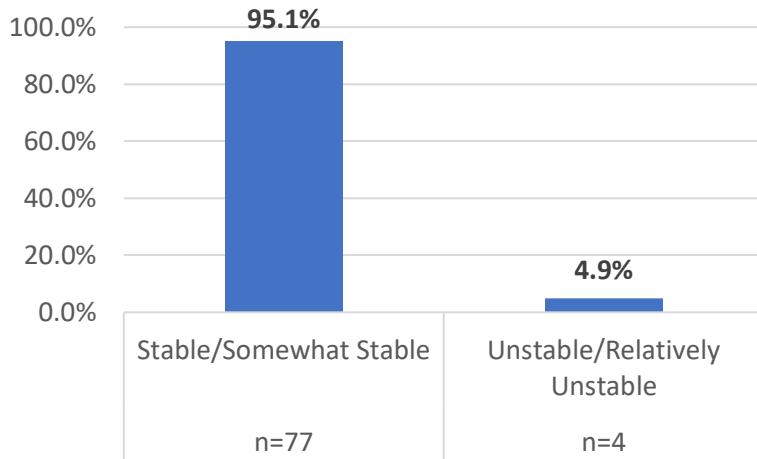
At 45-60 days after the initial conference, most focus children/youth who had a conference to remain in their home did not move since the conference (73.8%; see Figure 7).

Figure 7. Number of Moves Since Initial Conference (N=80)



Note: Response options also included "4 or more moves" but there were no focus children/youth who had this number of moves.

Figure 8. Stability of Living Arrangements (N=81)



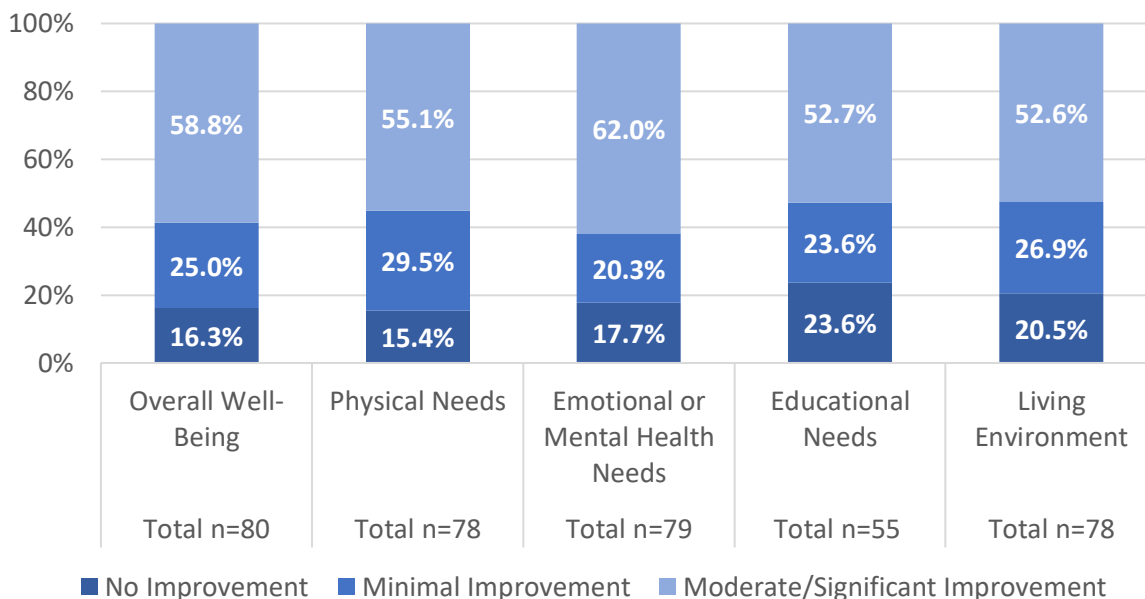
Since the initial conference, how stable have the child/youth's daily living arrangements been?

At 45-60 days after the initial conference, the living arrangements were stable or somewhat stable for most of the focus children/youth who had a conference to remain in their home (95.1%; see Figure 8).

Since the initial conference, has the family's plan, directly or indirectly, improved the child/youth's overall well-being, physical needs, emotional or mental health needs, educational needs, and living environment?

At 45-60 days after the initial conference, the FGDM Coordinator/Facilitator indicated the family's plan moderately or significantly improved the overall well-being (58.8%), physical needs (55.1%), emotional or mental health needs (62.0%), educational needs (52.7%), and living environment (52.6%) for over half of focus children/youth who had a conference to remain in their home (see Figure 9).

Figure 9. Improvements in Well-Being, Needs, and Living Environment



Note: Educational needs were only reported for school-aged children/youth.

Key Takeaways

- Among counties that held FGDM conferences during SFY 2021-2022 and participated in the statewide evaluation, most of the outcome assessments they submitted occurred 45-60 days after the initial conference.
- At 45-60 days after the initial conference, for nearly all purpose types, the family's plan has been effective or strongly effective in meeting the conference purpose for over half of focus children/youth.
- Many focus children/youth who had a conference to stay in their home identified as male. A small percentage of focus children/youth were among minority/marginalized racial and ethnic groups.
- At 45-60 days after the initial conference, many focus children/youth who had a conference to stay in their home did remain in their home, and their living arrangements were stable or somewhat stable. There were no substantiated/founded or indicated reports of child abuse/neglect for almost all of these children/youth. Additionally, among many of them, the FGDM Coordinator/Facilitator indicated their family's plan contributed to improvements in their overall well-being, various needs, and their living environment.

Family Group Decision Making Statewide Evaluation SFY 2021 – 2022

Outcomes Report: Supplement 1



This document presents supplemental results for the FGDM SFY 2021-2022 Outcomes Report. The data reported are based on evaluation form submissions through September 8, 2022 (i.e., 281 outcome forms from 236 conferences), which align with the data presented in the main outcomes report. The results include a closer look at the outcomes of **31 focus children/youth who had a conference to address out-of-home placement** (i.e., change in placement setting, plan and assist in reunification, or prevent out-of-home placement disruption) at 45-60 days after the initial conference.

Please note: Outcome forms are completed by a professional, typically the coordinator or facilitator of the conference. Therefore, responses do not reflect the family’s opinions/perspectives of their child’s outcomes. Also, the total number of responses to each outcome question varies, as some evaluation forms did not include a response to every question. ***Furthermore, there is a very small sample of 45-60 day follow-up assessments for conferences held to address out-of-home placement, and the results are only based on evaluation forms submitted by counties participating in the FGDM Statewide Evaluation.*** Therefore, these results do not represent the outcomes of all children/youth in Pennsylvania who had an FGDM conference to address out-of-home placement. However, the results do contribute to our understanding of the outcomes of these children/youth.

Closer Look at the Conference Purpose of Addressing Out-of-Home Placement

Figure S1. Focus Child/Youth Ethnicity (N=28)

Focus Child/Youth Demographics

The focus children/youth who had a conference to address out-of-home placement primarily identified as Non-Hispanic/Latino (75.0%; see Figure S1). The largest racial group was White children/youth (48.4%; see Figure S2). Over half of the children/youth identified as female (51.6%; see Figure S3). The average age of these children/youth was 7 years (range=0-18 years).

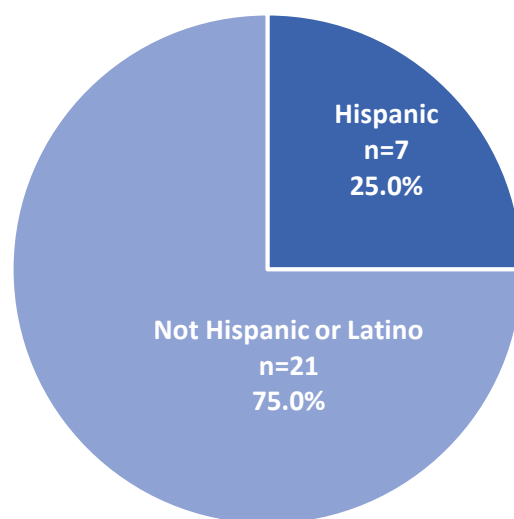


Figure S2. Focus Child/Youth Race (N=31)

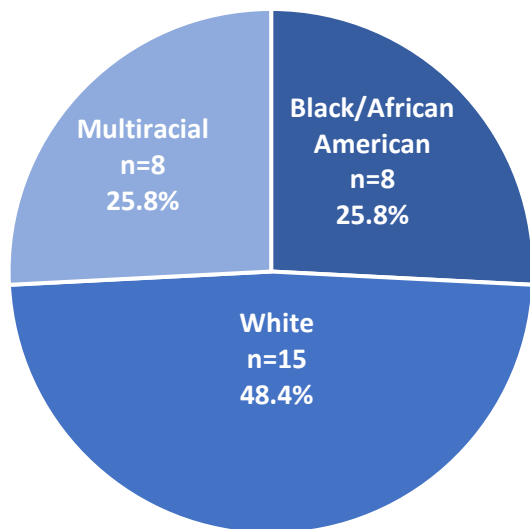
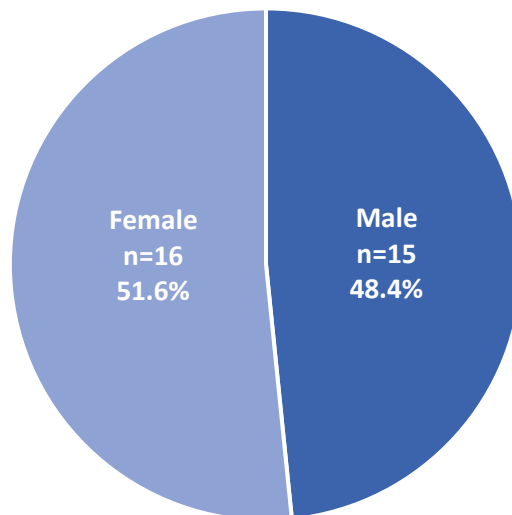
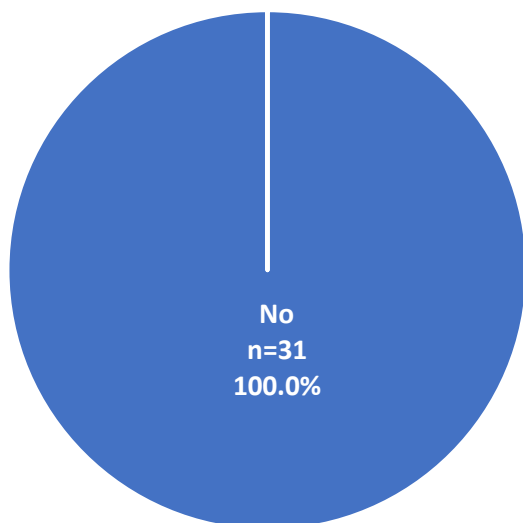


Figure S3. Focus Child/Youth Gender (N=31)



Note: Response options also included Native American/Alaskan/Hawaiian, Asian/Pacific Islander, and Other, but there were no focus children/youth who identified as these racial groups.

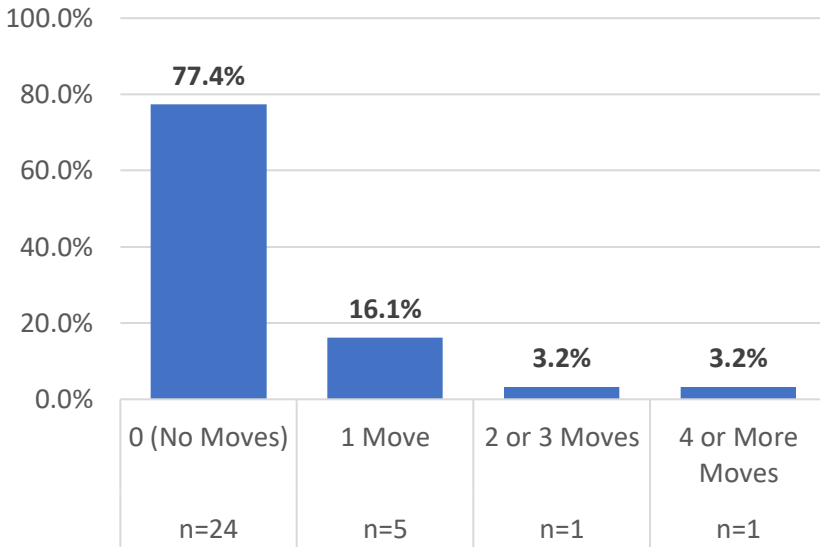
Figure S4. Substantiated/Founded or Indicated Reports of Child Abuse/Neglect (N=31)



Since the initial conference, have there been substantiated/founded or indicated reports of child abuse/neglect for this child/youth?

At 45-60 days after the initial conference, there were no substantiated/founded or indicated reports of child abuse/neglect for all focus children/youth who had a conference to address out-of-home placement (100.0%; see Figure S4).

Figure S5. Number of Moves Since Initial Conference (N=31)



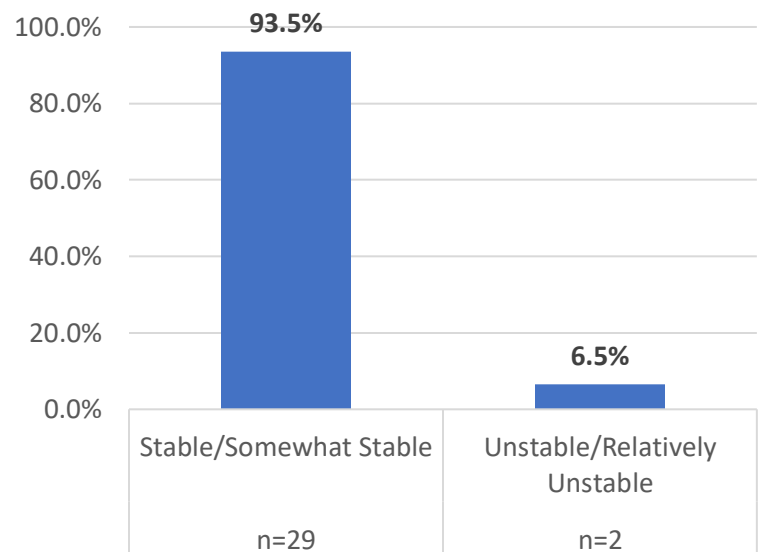
Since the initial conference, how many times has the child/youth moved (excluding respite stays)?

At 45-60 days after the initial conference, most focus children/youth who had a conference to address out-of-home placement did not move since the conference (77.4%; see Figure S5).

Figure S6. Stability of Living Arrangements (N=31)

Since the initial conference, how stable have the child/youth's daily living arrangements been?

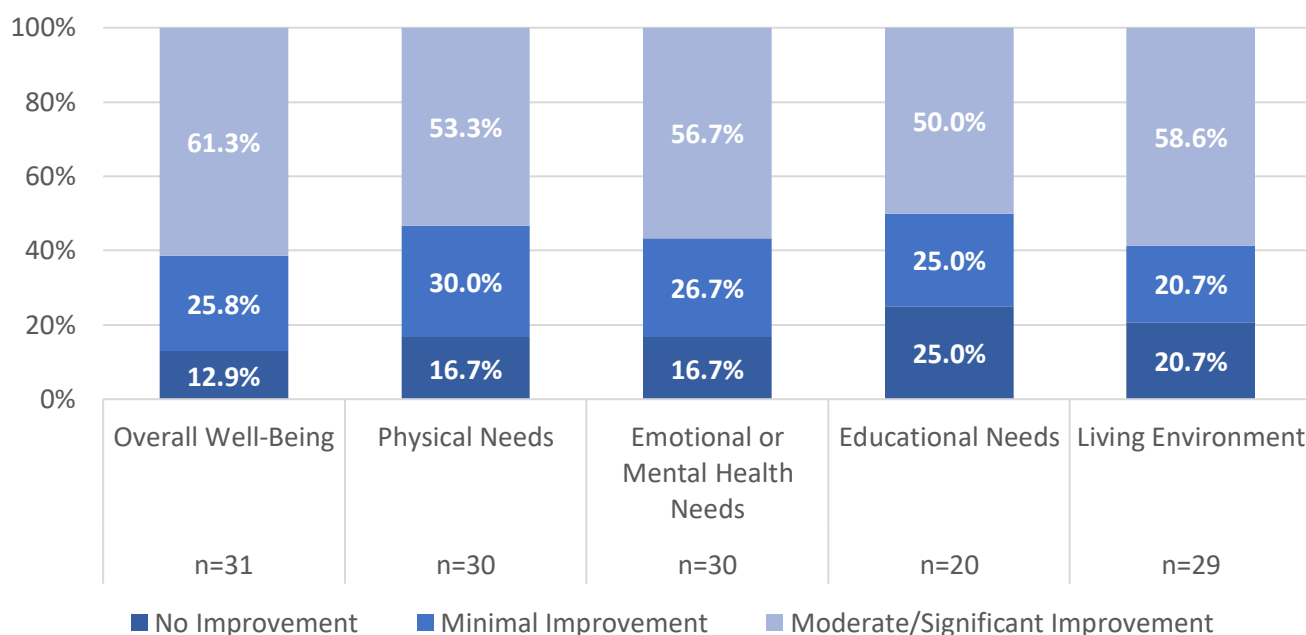
At 45-60 days after the initial conference, the living arrangements were stable or somewhat stable for most of the focus children/youth who had a conference to address out-of-home placement (93.5%; see Figure S6).



Since the initial conference, has the family's plan, directly or indirectly, improved the child/youth's overall well-being, physical needs, emotional or mental health needs, educational needs, and living environment?

At 45-60 days after the initial conference, the FGDM Coordinator/Facilitator indicated the family's plan moderately or significantly improved the overall well-being (61.3%), physical needs (53.3%), emotional or mental health needs (56.7%), educational needs (50.0%), and living environment (58.6%) for at least half of focus children/youth who had a conference to address out-of-home placement (see Figure S7).

Figure S7. Improvements in Well-Being, Needs, and Living Environment



Note: Educational needs were only reported for school-aged children/youth.

Key Takeaways

- Among counties that held FGDM conferences during SFY 2021-2022 and participated in the statewide evaluation, there was a very small number of 45-60 day outcome assessments submitted for focus children/youth who had a conference to address out-of-home placement.
- A few of the focus children/youth who had a conference to address out-of-home placement identified as Hispanic; however, over half of them identified as either Black/African American or Multiracial.
- At 45-60 days after the initial conference, many focus children/youth who had a conference to address out-of-home placement did not move, and their living arrangements were stable or somewhat stable. There were no substantiated/founded or indicated reports of child abuse/neglect for all of these children/youth. Additionally, for many of these children/youth, the FGDM Coordinator/Facilitator indicated their family's plan contributed to improvements in their overall well-being, various needs, and their living environment.

Family Group Decision Making Statewide Evaluation SFY 2021 – 2022

Outcomes Report: Supplement 2



This document is the final supplement to the FGDM SFY 2021-2022 Outcomes Report. The data reported are based on evaluation form submissions through September 8, 2022 (i.e., 281 outcome forms from 236 conferences), which align with the data presented in the main outcomes report. The results include a closer look at the outcomes of **49 focus children/youth who had a conference to address their parent's/caregiver's needs** (i.e., identify supports for caregivers; parent's medical/mental health/drug and alcohol issues; housing and environmental issues) and **34 focus children/youth who had a conference to address their own needs** (i.e., truancy; lack of supervision; child's medical/mental health/drug and alcohol issues; child's/youth's behavioral issues; prevent further delinquent behavior). The outcomes were measured at 45-60 days after the initial conference.

Please note: Outcome forms are completed by a professional, typically the coordinator or facilitator of the conference. Therefore, responses do not reflect the family's opinions/perspectives of their child's outcomes. Also, the total number of responses to each outcome question varies, as some evaluation forms did not include a response to every question. ***Furthermore, there are very small samples of 45-60 day follow-up assessments for conferences held to address the parent's/caregiver's needs or the focus child's/youth's needs, and the results are only based on evaluation forms submitted by counties participating in the FGDM Statewide Evaluation.*** Therefore, these results do not represent the outcomes of all children/youth in Pennsylvania who had an FGDM conference to address their parent's/caregiver's needs or their own needs. However, the results do contribute to our understanding of the outcomes of these children/youth.

Closer Look at the Conference Purpose of Addressing the Parent's/Caregiver's Needs

Focus Child/Youth Demographics

The focus children/youth who had a conference to address the needs of their parents/caregivers primarily identified as Non-Hispanic/Latino (81.3%; see Figure S1). The largest racial group was White children/youth (69.4%; see Figure S2). Most of the children/youth identified as male (69.4%; see Figure S3). The average age of these children/youth was 6 years (range=0-15 years).

Figure S1. Focus Child/Youth Ethnicity (N=48)

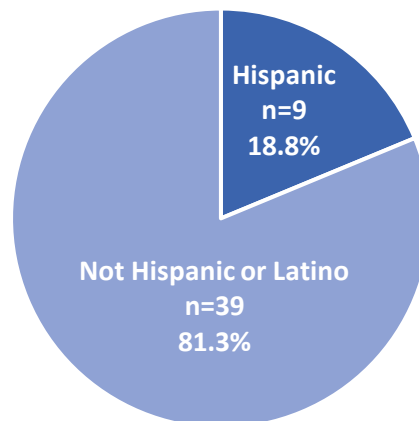
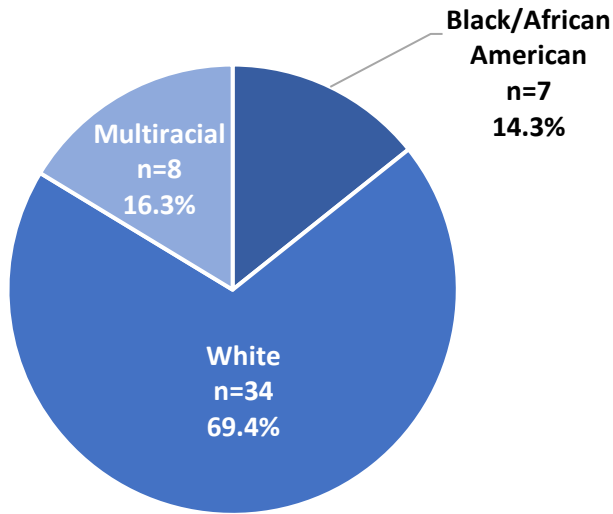


Figure S2. Focus Child/Youth Race (N=49)



Note: Response options also included Native American/Alaskan/Hawaiian, Asian/Pacific Islander, and Other, but there were no focus children/youth who identified as these racial groups.

Figure S3. Focus Child/Youth Gender (N=49)

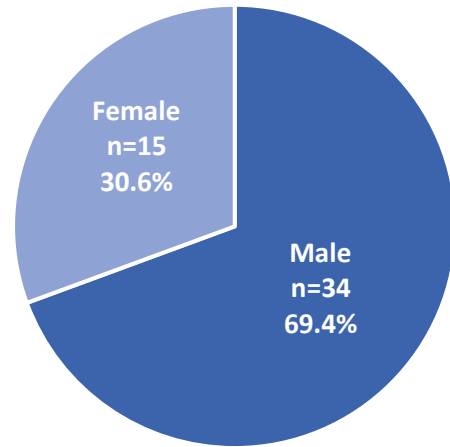
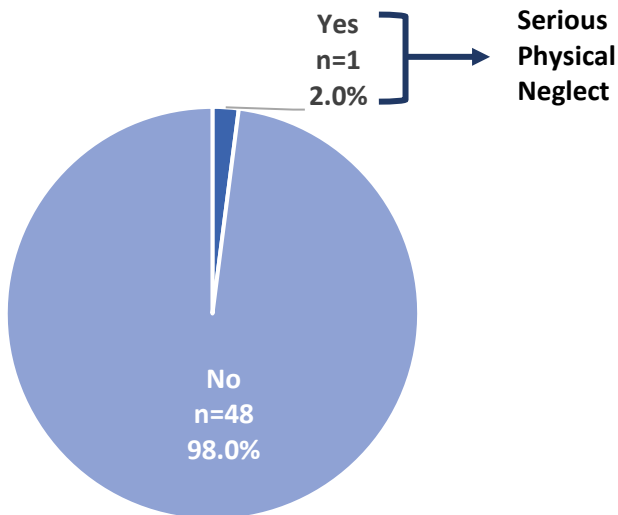


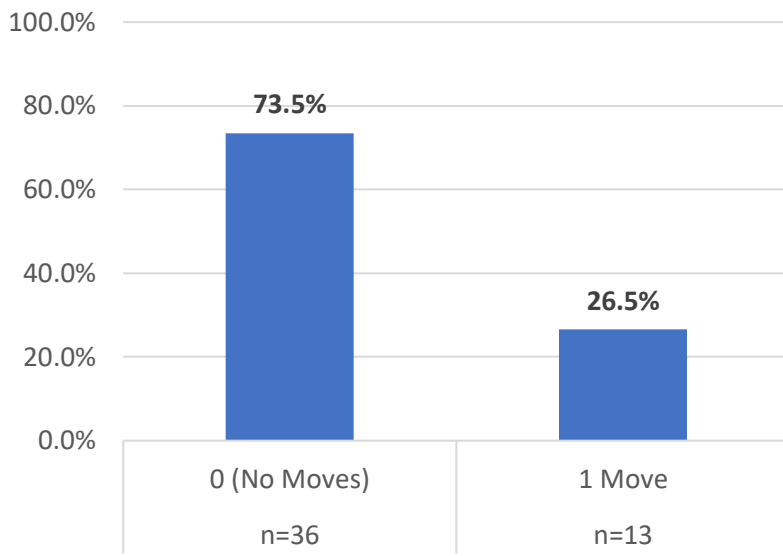
Figure S4. Substantiated/Founded or Indicated Reports of Child Abuse/Neglect (N=49)



Since the initial conference, have there been substantiated/founded or indicated reports of child abuse/neglect for this child/youth?

At 45-60 days after the initial conference, there were no substantiated/founded or indicated reports of child abuse/neglect for almost all focus children/youth who had a conference to address their parent's/caregiver's needs (98.0%; see Figure S4).

Figure S5. Number of Moves Since Initial Conference (N=49)

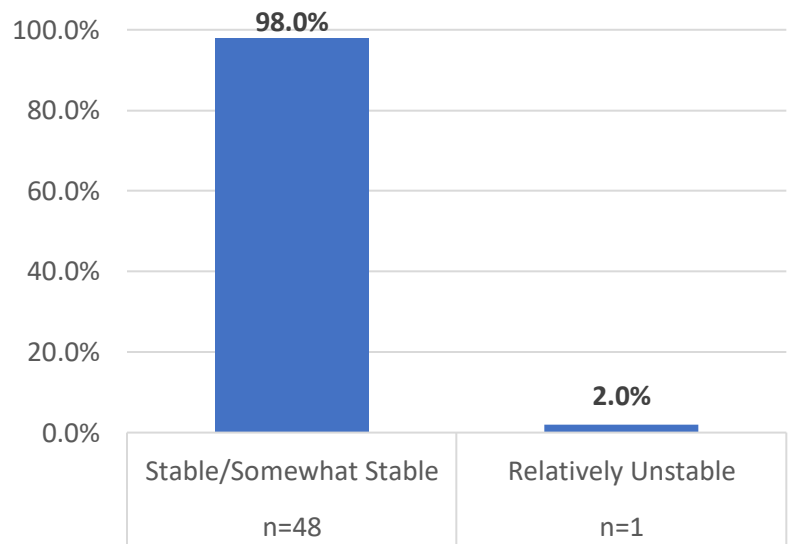


Since the initial conference, how many times has the child/youth moved (excluding respite stays)?

At 45-60 days after the initial conference, most focus children/youth who had a conference to address their parent's/caregiver's needs did not move since the conference (73.5%; see Figure S5).

Note: Response options also included "2 or 3 moves" and "4 or more moves," but there were no focus children/youth who had this number of moves.

Figure S6. Stability of Living Arrangements (N=49)



Since the initial conference, how stable have the child/youth's daily living arrangements been?

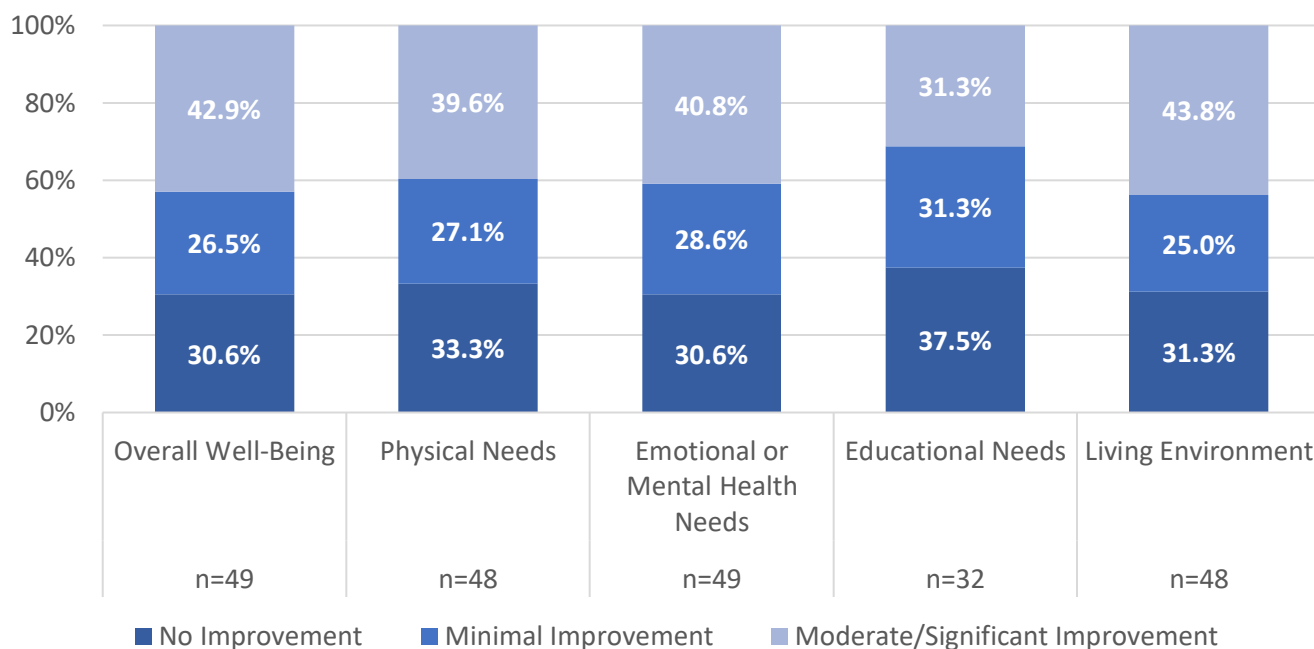
At 45-60 days after the initial conference, the living arrangements were stable or somewhat stable for almost all of the focus children/youth who had a conference to address their parent's/caregiver's needs (98.0%; see Figure S6).

Note: Response options also included "Unstable," but there were no focus children/youth with this response.

Since the initial conference, has the family's plan, directly or indirectly, improved the child/youth's overall well-being, physical needs, emotional or mental health needs, educational needs, and living environment?

At 45-60 days after the initial conference, the FGDM Coordinator/Facilitator indicated the family's plan moderately or significantly improved the overall well-being (42.9%), physical needs (39.6%), emotional or mental health needs (40.8%), educational needs (31.3%), and living environment (43.8%) for less than half of focus children/youth who had a conference to address their parent's/caregiver's needs (see Figure S7).

Figure S7. Improvements in Well-Being, Needs, and Living Environment



Note: Educational needs were only reported for school-aged children/youth.

Closer Look at the Conference Purpose of Addressing the Focus Child's/Youth's Needs

Focus Child/Youth Demographics

The focus children/youth who had a conference to address their needs primarily identified as Non-Hispanic/Latino (93.9%; see Figure S8). The largest racial group was White children/youth (81.8%; see Figure S9). Over half of the children/youth identified as male (55.9%; see Figure S10). The average age of these children/youth was 13 years (range=1-17 years).

Figure S8. Focus Child/Youth Ethnicity (N=33)

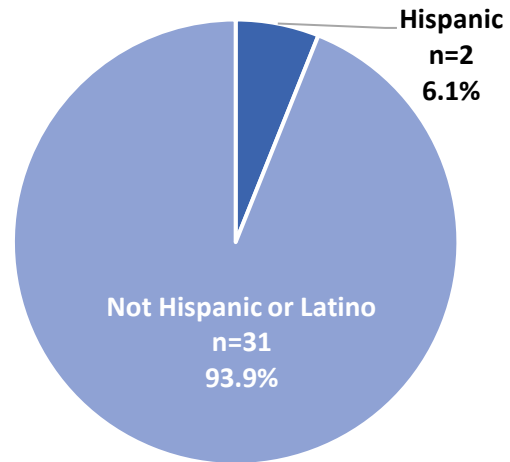


Figure S9. Focus Child/Youth Race (N=33)

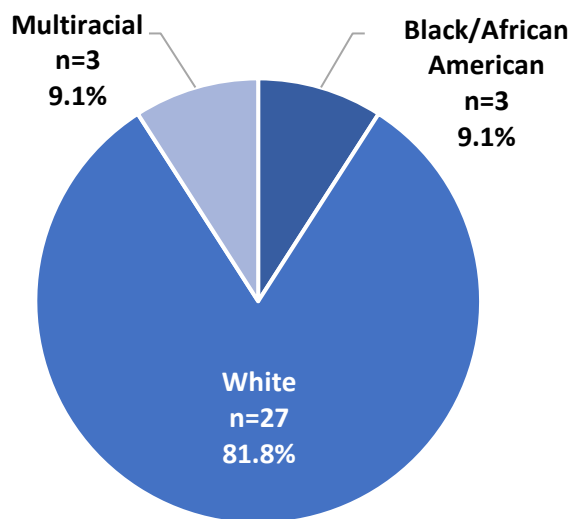
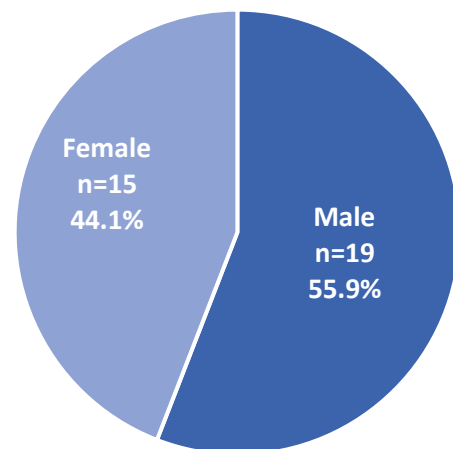
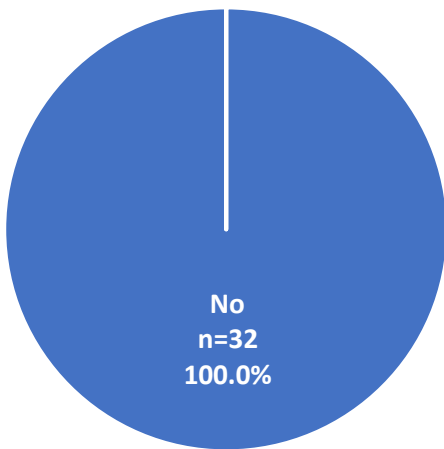


Figure S10. Focus Child/Youth Gender (N=34)



Note: Response options also included Native American/Alaskan/Hawaiian, Asian/Pacific Islander, and Other, but there were no focus children/youth who identified as these racial groups.

Figure S11. Substantiated/Founded or Indicated Reports of Child Abuse/Neglect (N=32)



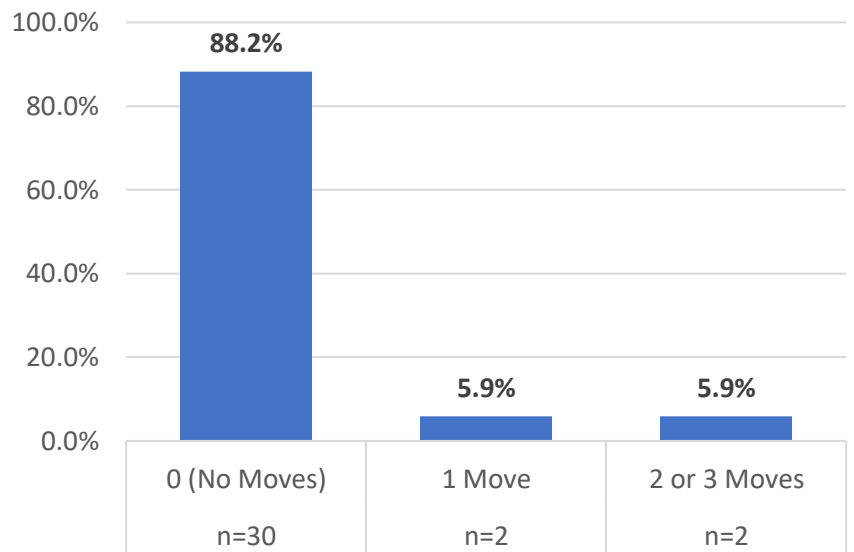
Since the initial conference, have there been substantiated/founded or indicated reports of child abuse/neglect for this child/youth?

At 45-60 days after the initial conference, there were no substantiated/founded or indicated reports of child abuse/neglect for all focus children/youth who had a conference to address their needs (100.0%; see Figure S11).

Since the initial conference, how many times has the child/youth moved (excluding respite stays)?

At 45-60 days after the initial conference, most focus children/youth who had a conference to address their needs did not move since the conference (88.2%; see Figure S12).

Figure S12. Number of Moves Since Initial Conference (N=34)

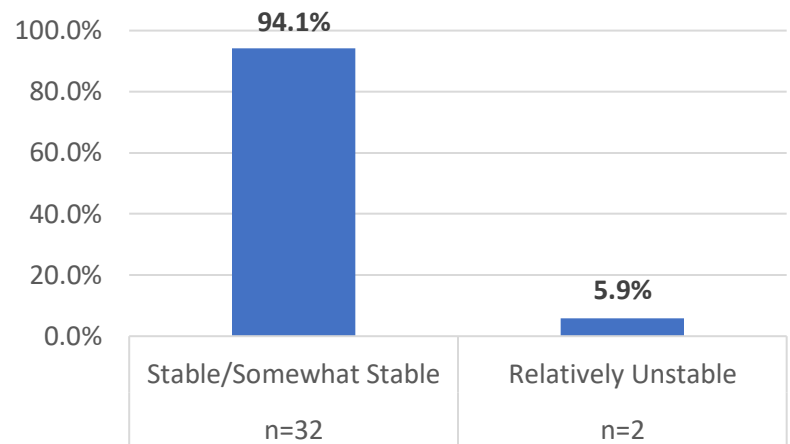


Note: Response options also included “4 or more moves,” but there were no focus children/youth who had this number of moves.

Since the initial conference, how stable have the child/youth's daily living arrangements been?

At 45-60 days after the initial conference, the living arrangements were stable or somewhat stable for most of the focus children/youth who had a conference to address their needs (94.1%; see Figure S13).

Figure S13. Stability of Living Arrangements (N=34)

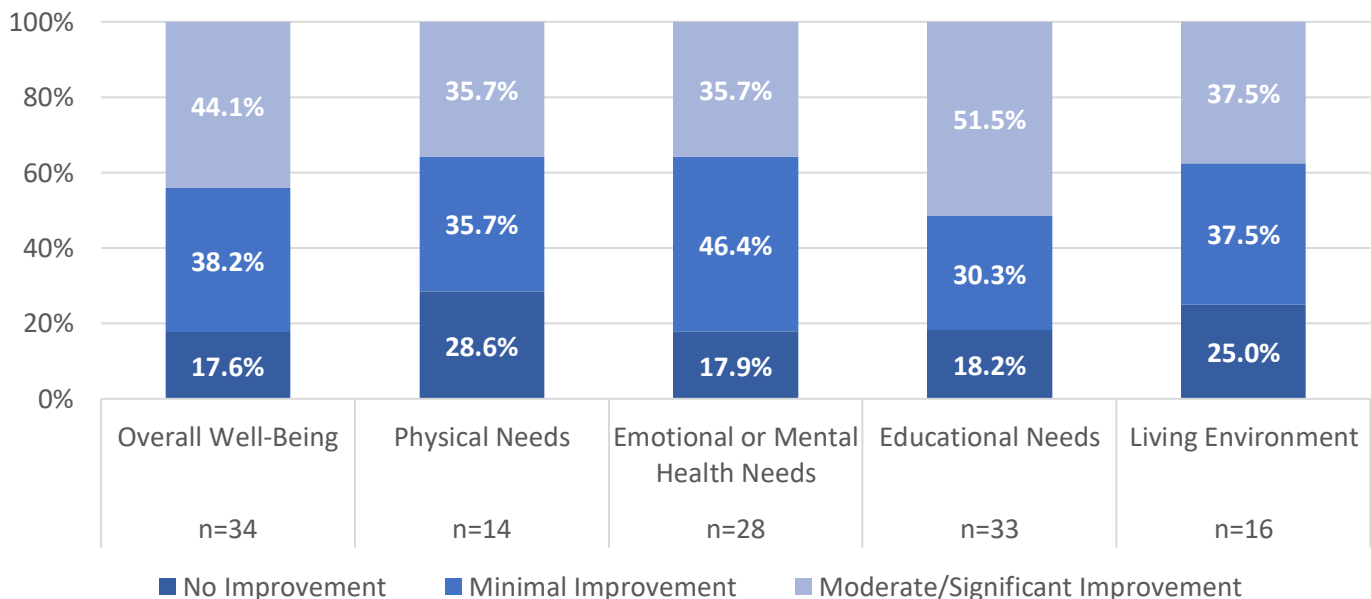


Note: Response options also included "Unstable," but there were no focus children/youth with this response.

Since the initial conference, has the family's plan, directly or indirectly, improved the child/youth's overall well-being, physical needs, emotional or mental health needs, educational needs, and living environment?

At 45-60 days after the initial conference, the FGDM Coordinator/Facilitator indicated the family's plan moderately or significantly improved the overall well-being (44.1%), physical needs (35.7%), emotional or mental health needs (35.7%), educational needs (51.5%), and living environment (37.5%) for up to half of focus children/youth who had a conference to address their needs (see Figure S14).

Figure S14. Improvements in Well-Being, Needs, and Living Environment



Note: Educational needs were only reported for school-aged children/youth.

Key Takeaways

- Among counties that held FGDM conferences during SFY 2021-2022 and participated in the statewide evaluation, there was a small amount of 45-60 day outcome assessments submitted for focus children/youth who had a conference to address their parent's/caregiver's needs or their own needs.
- Many focus children/youth who had a conference to address their parent's/caregiver's needs or their own needs identified as male. Among both conference purposes, a small percentage of the children/youth were among minority/marginalized racial and ethnic groups.
- At 45-60 days after the initial conference, many focus children/youth who had a conference to address their parent's/caregiver's needs or their own needs did not move, and their living arrangements were stable or somewhat stable. There were no substantiated/founded or indicated reports of child abuse/neglect for almost all of the children/youth who had a conference to address their parent's/caregiver's needs. There were no such reports for all the children/youth who had a conference to address their own needs. Among both conference purposes, the FGDM Coordinator/Facilitator indicated their family's plan contributed to improvements in their overall well-being, various needs, and their living environment for up to half of these children/youth.